



- Ergonomic and effortless hydraulic lifting system
- Two lifting speeds: faster speed for initial lift and slower speed for precision positioning
- Extendable tilting platform can adapt to different loads
- Perforated platform for attaching adaptors and support pins
- Pallet truck-style controls for easy and precise movement



Accessories

Set of Adaptors - LOM/4619316

8 x universal adaptors for EV battery lift

- 4 adaptors with pad
- 4 adaptors with pins

Specifications

Power supply: 230V 50Hz

Motor power: 1.5kW

Vehicle types: Car, Light Commercial Vehicle

Lifting capacity: 1200kg

Min. height: 800mm

Max. height: 1810mm

Lifting platform length: 1741 - 2066mm

Lifting platform width: 800mm

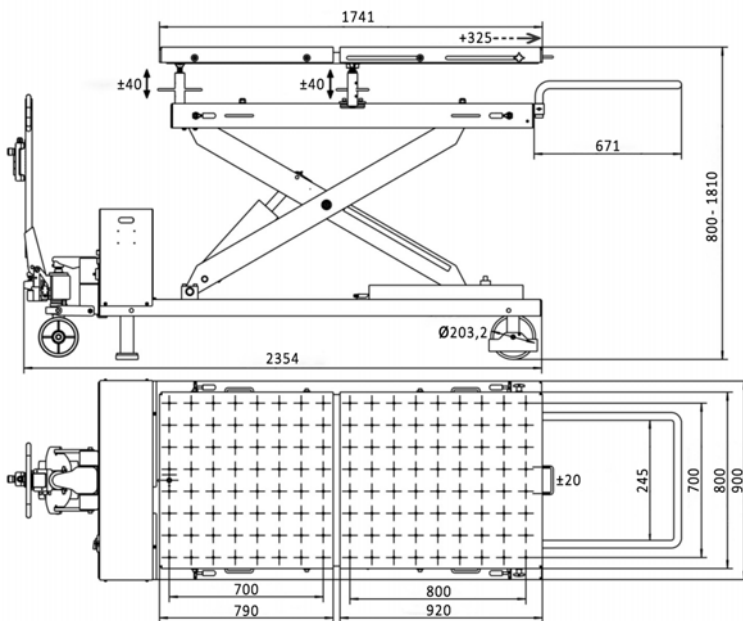
Laterally adjustable range: 20mm

Lifting platform tilting range: 40mm

Lifting/lowering time: 45/40 secs

Installation type: Mobile

Net weight: 560kg



Muller Automotive UK Ltd

Unit 15 Hearder Court,
Beechwood Way,
Plymouth, PL7 5HH
01752 929 929

Sales@MullerAutomotive.co.uk

E&OE. This document's content and data (text and images) are not contractual and subject to change, developments, or improvements, particularly technical ones.