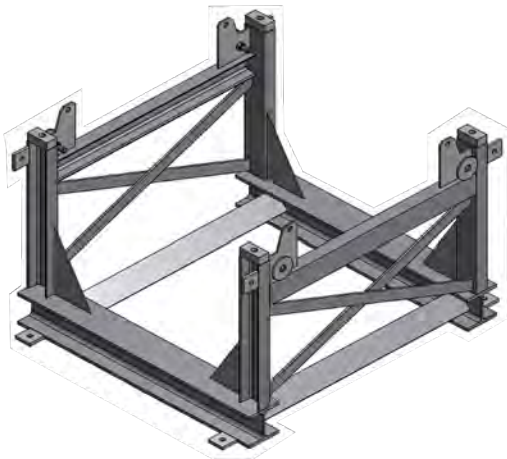
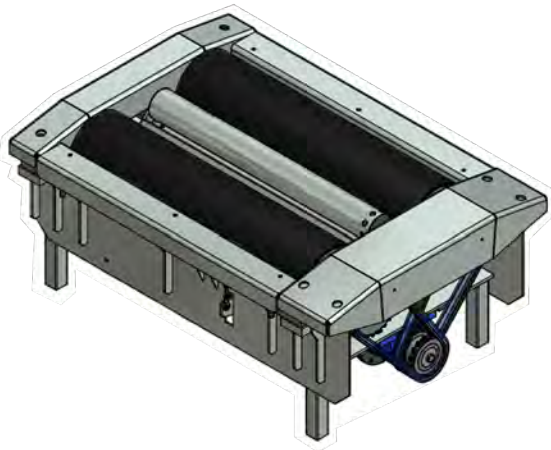




- 16.0t Axle load capacity
- 15kW Motors with 'soft-start' feature
- 8 Sensor axle weighing system
- Reversible rollers for 4x4s
- Recessed/inground installation
- Integrated vehicle record database
- Can be retrofitted into many existing CV brake tester recesses



Specifications

Vehicle types: Commercial Vehicle
Installation type: Recessed/Inground
Maximum axle load: 16000kg
Measuring range: 40kN
Roller speed: 1.6mph
Roller dimensions: 250 x 1000mm
Motor: 2 x 15kW
Power Supply: 3ph 400V 50Hz
Frame Finish: Hot Zinc Dip

Muller Automotive UK Ltd

Unit 15 Hearder Court,
Beechwood Way,
Plymouth, PL7 5HH
01752 929 929

Sales@MullerAutomotive.co.uk

E&OE. This document's content and data (text and images) are not contractual and subject to change, developments, or improvements, particularly technical ones.